

# BL

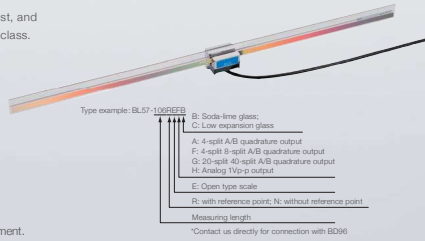
## BL57-RE / BL57-NE (with/without reference point)

Supports a wide range of applications and offers the highest performance in its class. Ideal for precision stages, semiconductor inspection systems, precision processing machines, and liquid crystal manufacturing equipment.



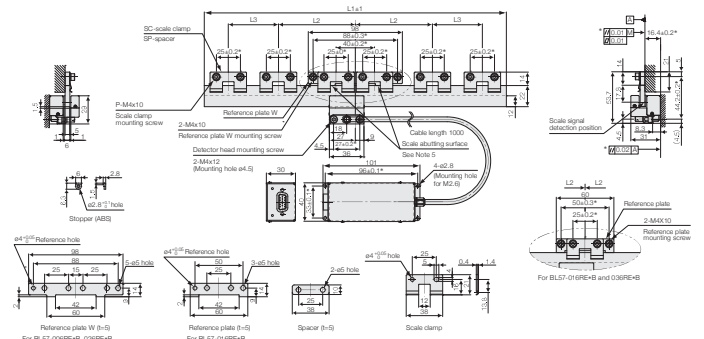
- BL57-RE**
- Achieves a measuring length of up to 1,060mm upon request, and offers the highest-level response speed and accuracy in its class.
  - Signal pitch : 400nm
  - Built-in reference point.
- (Applications) Precision measuring equipment, precision stages.

- BL57-NE**
- Compact size makes machine integration much easier
  - Theoretically unaffected by changes in temperature, humidity, air pressure and air movement. Unparalleled measuring stability achieved by use of low expansion glass
  - Signal pitch : 400nm
- (Applications) High-accuracy microscopes, measurement equipment.



### External Dimensions

#### ● BL57-xxxRE-B (Measuring length: 60/160/260/360/460 mm)

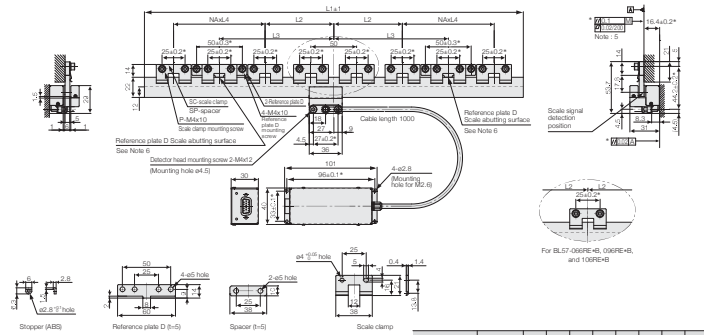


Note 1: The items marked by an asterisk indicate the machining dimensions on the mounting surface.  
 Note 2: The surface properties of the scale mounting surface is Rmax = 6.35.  
 Note 3: The surface properties of the detector head mounting surface is Rmax = 12.55.  
 Note 4: "M" refers to the machine guide.  
 Note 5: When mounting the reference plate (reference plate W), adjust the plate so that the parallelism between the corresponding scale abutting surface and the machine guide is 0.01mm or less.

Model	Measuring length	L1	L2	L3	SC	SP	P
BL57-006RE-B	60	96	—	2	—	4	—
BL57-016RE-B	160	306	75	—	3	2	6
BL57-026RE-B	260	396	150	—	4	2	8
BL57-036RE-B	360	396	75	75	5	4	10
BL57-046RE-B	460	496	150	75	6	4	12

Unit: mm

#### ● BL57-xxxRE-B (Measuring length: 560/660/760/860/960/1060 mm)



Note 1: The items marked by an asterisk indicate the machining dimensions on the mounting surface.  
 Note 2: The surface properties of the scale mounting surface is Rmax = 6.35.  
 Note 3: The surface properties of the detector head mounting surface is Rmax = 12.55.  
 Note 4: "M" refers to the machine guide.  
 Note 5: The surface of the scale mounting surface must be within 0.02 over the range of 1 inch to 333 length (mm).  
 Note 6: Mount and adjust the parallel reference plate (D) so that that reference surface have a parallelism of 0.1 or less with respect to the machine guide.

Model	Measuring length	L1	L2	L3	L4	NA	SC	SP	P
BL57-056RE-B	560	596	100	175	75	2	8	6	16
BL57-066RE-B	660	696	75	225	75	3	8	7	18
BL57-076RE-B	760	796	100	250	75	3	10	8	20
BL57-086RE-B	860	896	100	250	75	4	12	10	24
BL57-096RE-B	960	996	75	300	75	5	13	11	28
BL57-106RE-B	1060	1096	75	300	75	6	15	13	30

Unit: mm