

Reference test block acc. to ASME V

Art.-Nr. 127.100.000



The reference test block consists of an aluminium panel (80 mm x 50 mm x 10 mm). Cracks are induced through heat treatment. The reference test block serves for **f sensitivity of indication control of penetrant testing products**.

Direct comparison of two penetrants is possible through division into two parts,.

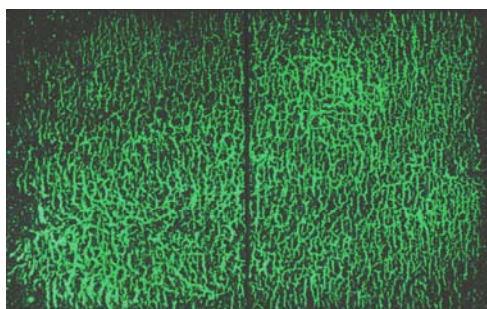
Flaw detection capability of a testing products system mainly depends on

- careful performance of testing,
- properties of the testing products system and
- the different application techniques.

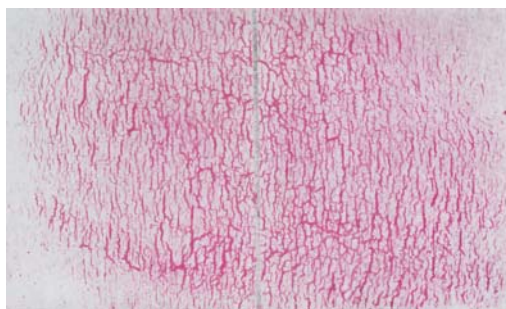
Testing products systems are approved by a test laboratory accredited acc. to EN ISO/IEC 17025 after verification by e.g.

- sample inspection acc. to EN 3452-2 or
- sector specific testing e.g. acc. MIL Standard

Besides sample inspection and batch control by the producer EN 3452-1 claims regularly control and surveillance of testing products by the applicant.



*Reference test block with
fluorescent penetrant*



*Reference test block with
colour contrast penetrant*

NOTE!

The sensitivity obtained with the reference test block is not indicative of the sensitivity obtained by the part under test.

Heidgraben, July 2017

Subject to technical changes