

Reference test block 2

Testing and washability control

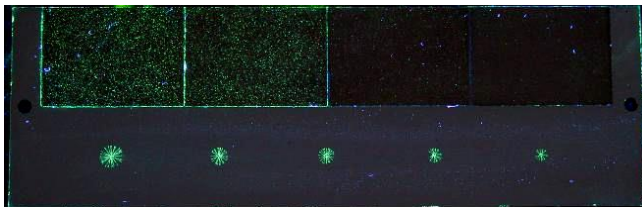
Art. No.: 127.550.000



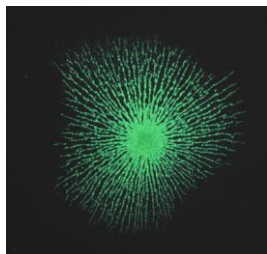
The **Reference block 2** is made of stainless steel. The panel is rectangular in shape. Dimensions: 155 mm x 50 mm x 2.5 mm. One side is divided into four areas with different surface roughnesses ($R_a = 2.5 \mu\text{m}$, $5 \mu\text{m}$, $10 \mu\text{m}$ and $15 \mu\text{m}$).

The other side is hard chromium-plated. Five large star-like artificial crack centres were produced artificially by ball insertions with different pressing forces (diameter of crack centres: 3 mm, 3.5 mm, 4 mm, 5 mm and 5.5 mm).

A **declaration of conformity** of the respective reference block with EN ISO 3452-3 and an **inspection certificate** acc. to EN 10204, Typ 3.1 B is attached.



Indications of control of fluorescent penetrant



Measurement of a typical indication with help of an image processing system

Application

- Control of washability (interim cleaning) by using the rough areas
- Surveillance of testing by the user with help of the crack centres

Remarks

No conclusion with respect to the sensitivity class of the testing system can be derived from the indications at the reference block.

Furthermore, two different testing systems cannot be compared with help of the reference block 2.

Heidgraben, Oktober 2020
Subject to technical changes