

## ACCESSORIES



50mm metal ring



100mm brush



150mm brush



Carry case



Reel carry belt



DC Charger /  
AV-out cable / USB cable



SD card

# Mitcorp



## PRSL 300

PIPE INSPECTION SYSTEM



website: [www.mitcorp.com.tw](http://www.mitcorp.com.tw)  
e-mail: [sal@mitcorp.com.tw](mailto:sal@mitcorp.com.tw)

2F., No.75, Wenhua 1st Rd., Guishan, Taoyuan 333, Taiwan  
T+886-3-328-7177 F+886-3-328-7176



LinkedIn: Mitcorp

FB: Mitcorpglobal

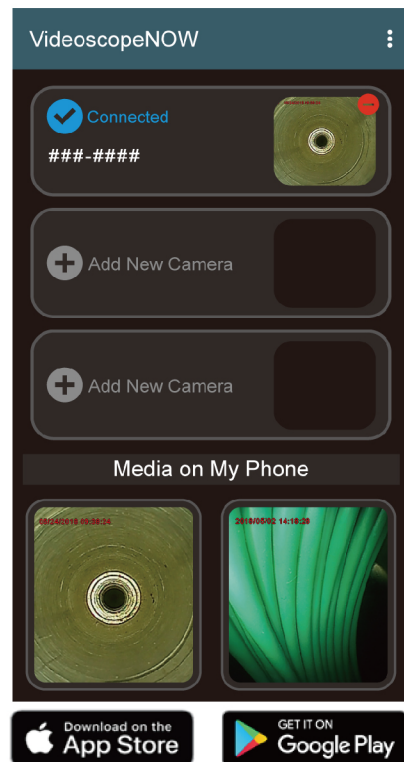
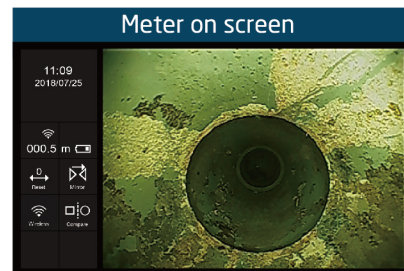
Youtube: Mitcorpglobal



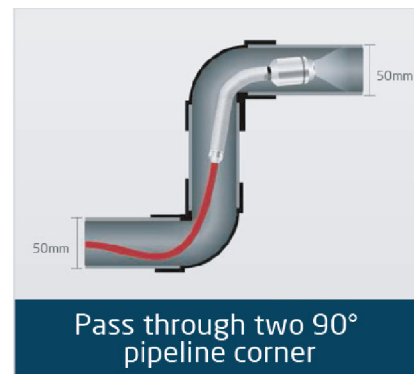


## F1700 / PRSL 300

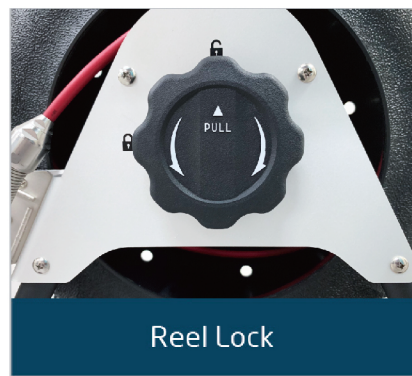
- 7" touch screen
- Meter on screen
- WiFi image share
- Self leveling
- 30mm push camera
- 30m/50m cable



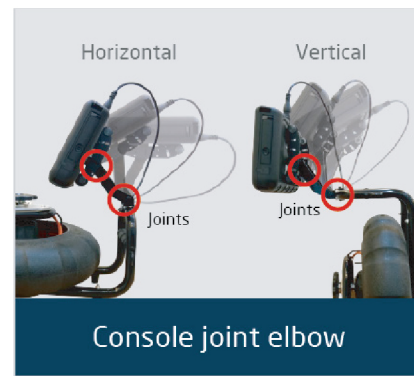
Self-leveling / 10 LED light



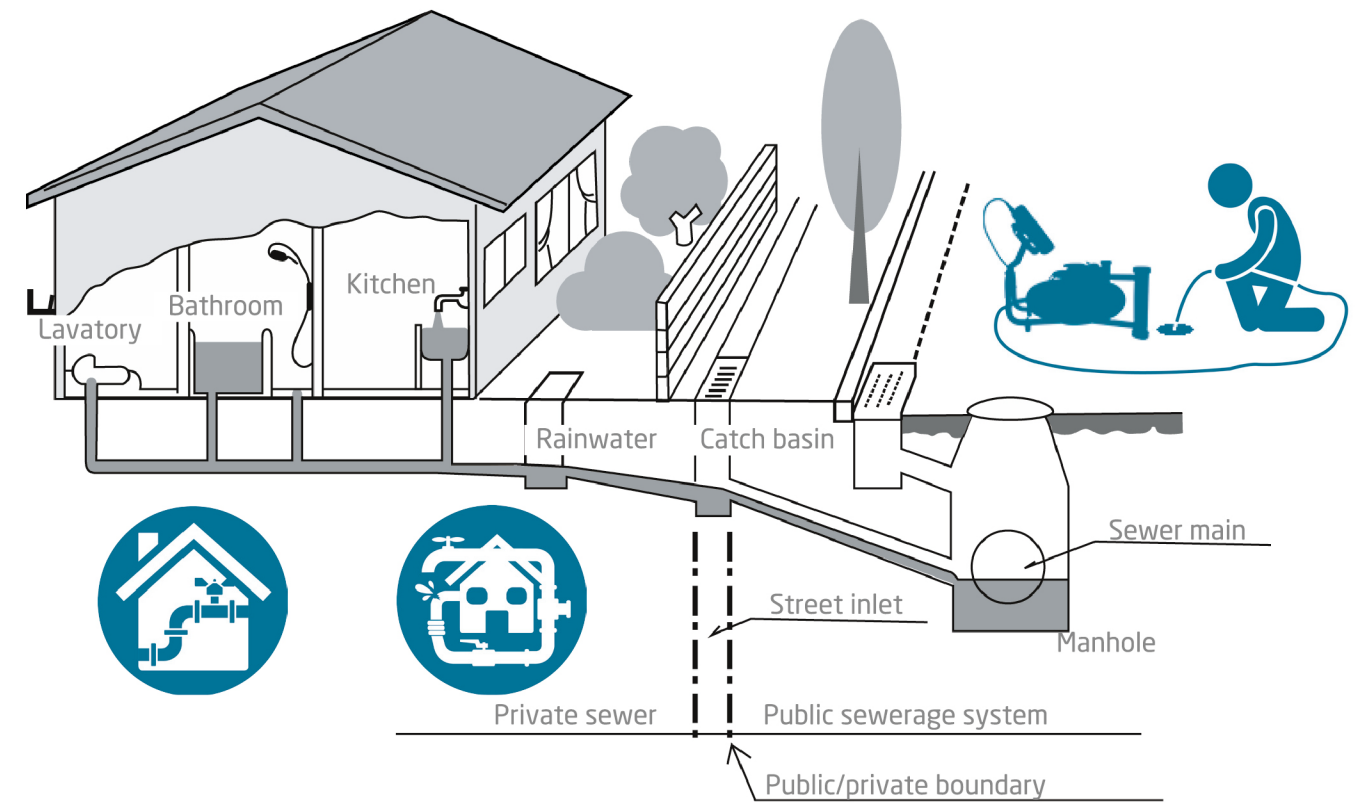
Pass through two 90° pipeline corner



Reel Lock



Console joint elbow



## Specifications Model : F1700 / PRSL 300

### F1700

Features	Description
LCD	7" LCD (800x480)
Dimension	240mm x 154mm x 47mm
Weight	1.3kg (2.86lb)
Water proof	IP57
Drop resistance	1m
Brightness adjustment	10 levels
Snapshot	640x480, .jpeg
Recording	640x480, .mov
Storage	SD card, up to 32G
USB	Mass storage mode / Webcam mode
AV output	NTSC / PAL
Audio input	Built-in microphone
Charging temperature	10°C~40°C
Working temperature	0°C~45°C with battery 0°C~40°C with AC power adaptor
Storage temperature	0°C~60°C
Power supply	Rechargeable Li battery, approximately 3.5 hrs charging / operating AC / power
WLAN	802.11 .bgn

### PRSL 300

Camera head	
Resolution	640 x 480
FOV	150°
DOF	3cm~∞
Probe head diameter	30mm
Probe head material	Stainless steel
Water proof	Under water 10m for 30 minutes
LED	Front
Working temperature	-10°C~60°C
Storage temperature	-10°C~60°C
Reel	
Diameter	340mm x 220mm x 420mm
Material	Steel frame HDPE cable reel
Probe	
Cable diameter	Φ6.6mm
Length	30m / 50m
Weight	30m 6.9kg (w/F1700) 50m 8.2kg (w/F1700)