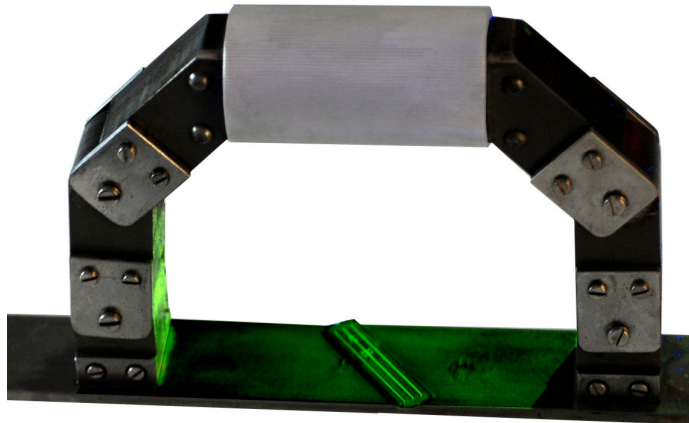


Flaw Finder Type N Permanent Magnet Art.-Nr. 131.001.022



The permanent magnet Flaw Finder was created and tested according to ASTM E709-95 & ASTM E1444. The magnetizing force of the permanent magnet was tested by determining its lifting power on the TB-10 magnetic weight lift test bars. The lifting force relates to the magnetic strength of the permanent magnet. Herewith we certify that the permanent magnet Flaw Finder has lifting force ≥ 265 N (27 kg) with a 100 to 150 mm spacing between legs¹ (minimum lifting force according ASTM E 709 is 225 N (22,5 kg) with a 100 to 150 mm spacing between legs)

¹ spacing between legs is measured from the center line of the pole legs.

Delivery Kit :

1 Flaw Finder Type N
1 Portable case

September 2008