







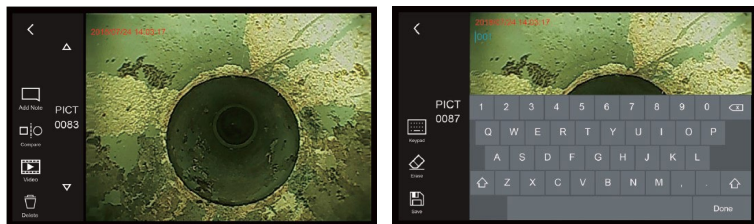
Pipe Insepection Camera

PR series

PR series | Rugged and Robust

- Equipped with IP57 main system (F1100), great for indoor and out door inspection
- Stainless steel camera head can be operated under water
- Optional accessories: metal ring, brush, wagon
- IP55 protection m/ft meter (optional)
- Rugged 7" Touchscreen monitor
- Advanced photo annotation & file management functions

 10mm DEPTH OF FIELD	 150° FIELD OF VIEW	 90° 25,000 times PASS THROUGH FOUR 90° ELBOW BENDS
 IP68 (CAMERA HEAD)	 IP65 (REEL)	 IP57 (SYSTEM)



Accessories

Metal Ring ø50mm



Large Brush ø100mm or ø150mm



Wagon ø150mm ~300mm



Interchangeable Probe



Specifications

Camera head:	
Lighting	8 LEDs (white)
Dimeter / Lenth	28mm
Material	Stainless steel
Working temperature	-10°C - 60°C
Storage temperature	-10°C - 60°C
Water proof	Can be operated under water 10m
Display resolution	640 x 480
Reel:	
Diameter	300mm
Water proof	IP65
Probe:	
Diameter	6.0mm
Applicable pipe(ø)	40mm - 100mm
Length	22mm