

X1000 Videoscope system PLUS

OPERATIONS ON THE FINGERTIPS



SPECIFICATIONS

X1000 PLUS SYSTEM

Features	Description
LCD	7"LCD (800 x 480)
Snapshot	640 * 480, jpeg
Recording	640 * 480 , MPEG4 (with audio)
Dimensions	240 * 154 * 47mm
System weight	1.3kg (2.86 lb)
Dust & Water proof	IP57
Drop resistance	1m
Battery	Rechargeable Li-Battery
Working temperature	0~60 °C
Storage temperature	0~60 °C
Charging temperature	10~60 °C
Relative humidity	Max 95% , non condensing
USB	Mass storage mode / Webcam mode
Storage	SD card, up to 32G
AV output	NTSC / PAL
Audio input	Built-in microphone
Brightness Adjust	8 levels (5+3 Boost levels)

ACCESSORIES



Also include: Usb cable, AV cable, clean set, SD card, user manual, installation driver

360 ARTICULATION TUBE

Features	Description
Probing head diameter	6.0mm
Tube length	2m/ 3m
Articulation	Full ways, ≥110°
LED	Front / Side
Button	Snapshot / LED + / LED -

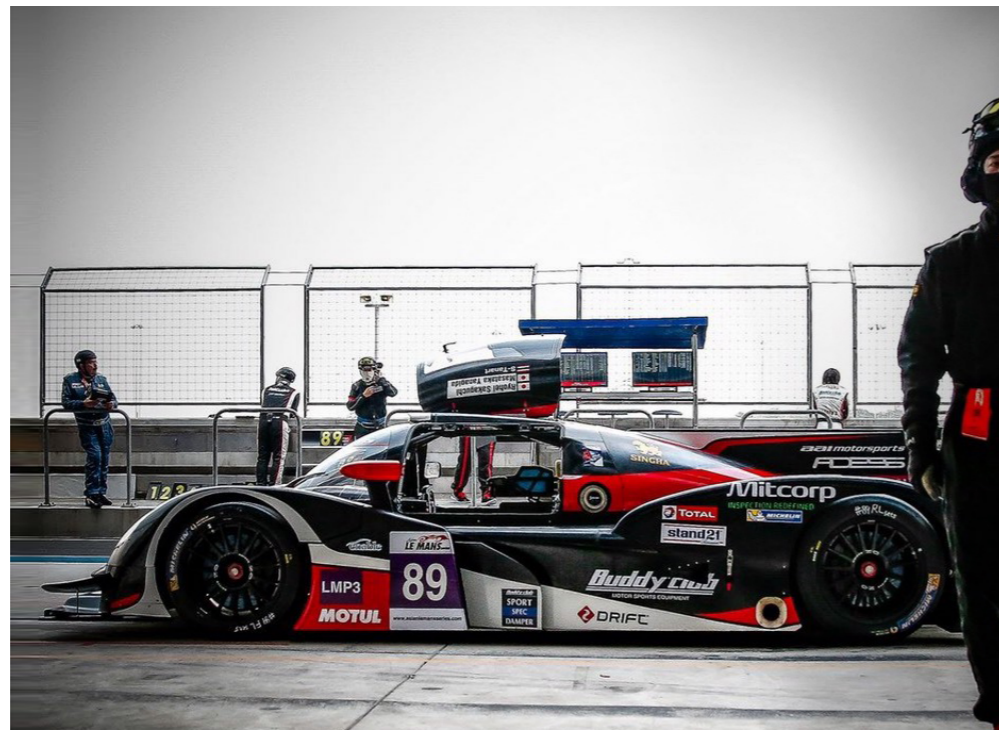


PRM100 PIPE INSPECTION CAMERA

Features	Description
Probing head diameter	10.0mm (w/o mirror) 10.5mm (w/ side view mirror)
Tube length	15m
Articulation	0
LED	Front / Side
Buttons (on meter)	Power m/ft switch LED backlight



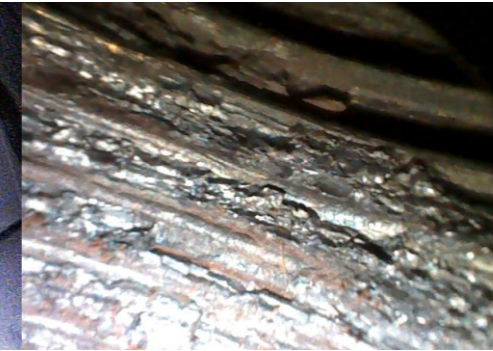
Mitcorp
INSPECTION REDEFINED



CLEARNESS



SHARPNESS



BRIGHTNESS

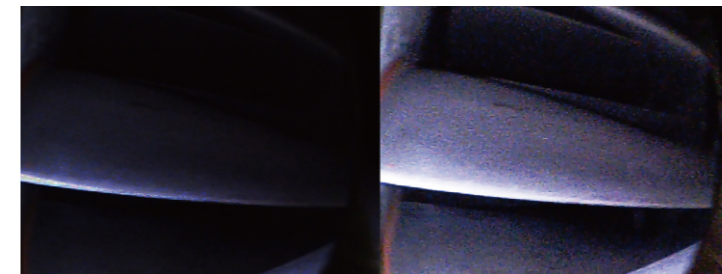


Our outstanding image processing technology implementation to sharpen the edges and optimize the image quality for best inspection result

8 levels of light adjustments to different inspection conditions, the 5 basic levels works for most inspections; 3 advanced levels will expand the exposure time for extremely dark environment

BOOST+

Ideals of extremely dark environment inspections



COMPARE

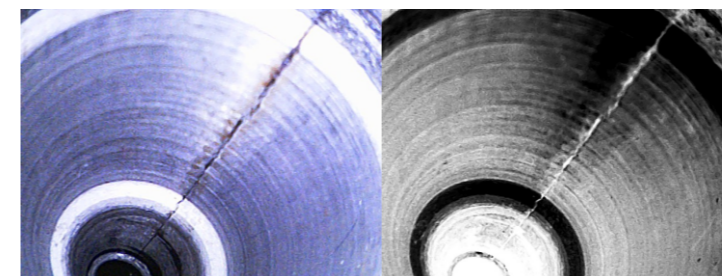
The side-by-side comparison of a still image with the live view allows user to verify the difference of an area at different times



*You can adjust the stored image frame during your inspection on the screen

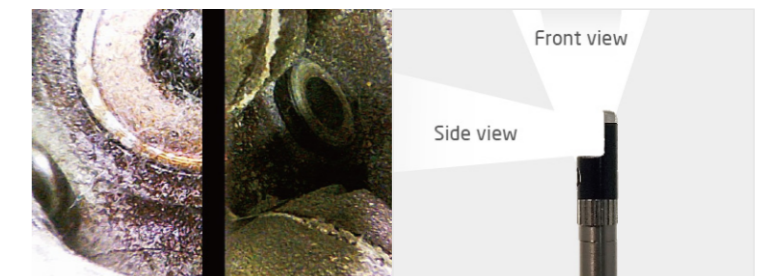
NEGATIVE+

Contrast enhancement to stand out cracks and details



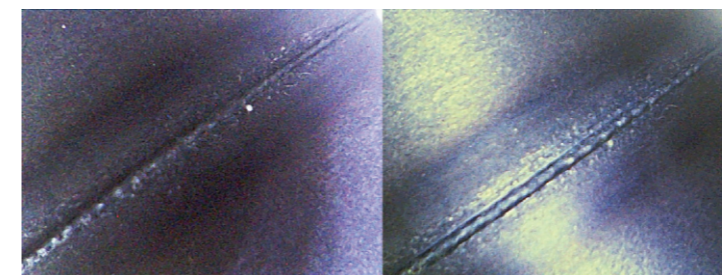
DUAL VIEWS IN DIVIDED SCREENS

To see front view and side view simultaneously (designated lens is need)



WHITE BALANCE ADJUSTMENT

You can adjust white balance via operation interface



Default

Warm

hyperion



PARTICLE FREE - To eliminate the dust on the screen without cleaning the mirror.



w/o Particle free

Particle free

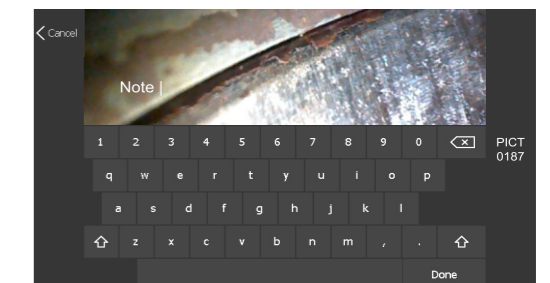
SKYPE READY

Simply connect to internet, you can Skype out to communicate with another PC anywhere



ADD NOTE

To put comparison information or comments on the captured image



KEY FEATURES

- Capacitive touch technology for best performance and durability
- 7" TFT LCD
- 1m drop resistance
- Sharp, clear, bright images
- 800x480 display resolution
- 640x480 video/photo resolution
- Rechargeable Li-battery
- Skype communication ready
- LED backlight function keys: ideal for dark environment operation
- USB camera: Support webcam device to remote access for data sharing and real-time diagnose
- USB reader: Simply connect to your PC to retrieve your data from the SD card, card reader is not necessary
- Neck/Hand strap: convenience and great for operation
- Light weight: only 1.3kg



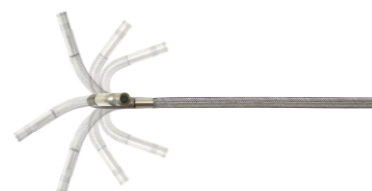
Touch screen operation



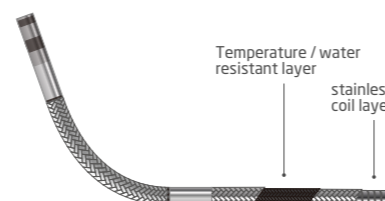
Can be operated under direct sunshine



- Fast and easy joystick operation - provide snapshot / light+ (boost) / light- functions on the controller
- IP55 protection



- 360° articulation
- Provide flexibilities in narrow space inspection



- High density stainless steel braided tube provide durability, flexibility and also rusty, water and temperature resistant